



Additional seeder
SH 1120 - 1540 - 2560 - 4080

PRODUCT INFORMATION



In one pass you can now sow **3 products at 3 different depths** with the ESPRO RC seed drills and **sow 3 products at 2 different depths** in Conservation Agriculture with the AUROCK RC seed drill.

The possibilities offered by the presence of several hoppers on a single seed drill are numerous and very beneficial. Establish two different varieties and incorporate a fertiliser or a cover with three precisely dosed varieties, deliver starter fertiliser or non-moving minerals as close as possible to the seed, or protect seedlings from pests such as slugs.

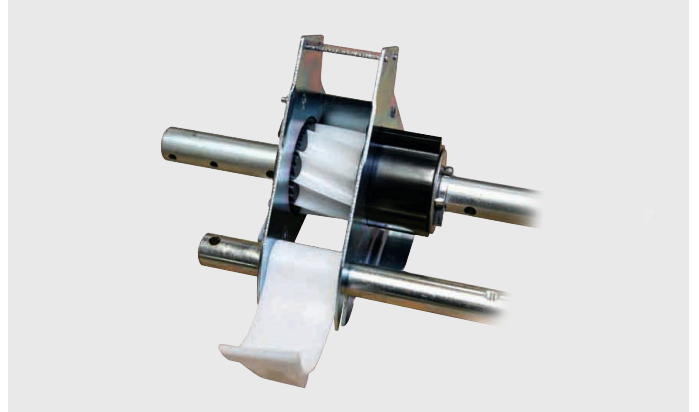
With the SH seeder, benefit from an additional compact seeder that can be adapted across the VENTA, ESPRO, AUROCK and TF front hopper ranges. Gain in precision when sowing your plant cover, anti-slug pellets and fertiliser granules with the HELICA helical grooves and ensure a perfect application rate and distribution in all conditions.

SH 1120 | 1540 | 2560 | 4080

SH 1120 TO MIX TWO DIFFERENT DOSES



SH 1120



HELICA metering unit

Positioned on the front part of the seed drill drawbar, the SH 1120 additional hopper offers a capacity of 110 l that allows sowing a multitude of products with a seeding density ranging from **0.6 to 65 kg/ha for any working width ranging from 3 to 6 m**. Thanks to the flow of air from the seed drill's blower and the two electrically driven **HELICA** metering units, an additional product contained in the SH 1120 hopper is incorporated with the machine's first **metering unit**. The electrical drive of the distribution system facilitates the implementation of the calibration test. A **simple pulse** on a switch is required to start the test.

Regardless of the size of the seed, the **HELICA roller** allows you to switch from one crop to another with ease. As the SH 1120 hopper is **ISOBUS-compatible**, the seed distribution is automatically controlled by the tractor's groundspeed and/or hitching position information.

You add a product perfectly individually dosed directly **into the seeding units**, without any additional components.

For example, you can sow **plant cover with three different varieties**, individually dosed using both compartments of your main hopper and this third additional hopper.

EXAMPLES OF USE	SOWING OF COVER 1	SOWING OF COVER 2
Product 1	Oats 15 kg/ha At 2 cm	Oats 15 kg/ha At 2 cm
Product 2	Field beans 50 kg/ha At 4 cm	Peas 20 kg/ha At 3 cm
Product 3	Vetch 20 kg/ha At 2 cm	Phacelia 2 kg/ha At 2 cm

Before establishing a cover crop, find out about the regulations in your area (nitrate directive), especially about the choice of varieties, dates and modes of destruction.



SH 1540 – 2560 – 4080 TO SOW SEEDS OR GRANULES DIRECTLY ON THE SURFACE



SH 1540 for 3 and 3.5 m working widths



SH 2560 for 4 m working width



SH 4080 for 6 m working width

Practice «seed broadcasting» in a single pass when sowing your main crop. SH 1540, 2560 and 4080 seeders have a capacity of 150, 250 and 400 l respectively to match the following working widths: 3 and 3.5, 4 and 6 m. They offer a seeding rate of **2.2 to 130 kg/ha**, respectively.

Using the flow of air from the seed drill blower or an external blower and the electrically driven **HELICA** metering units, an additional product contained in these hoppers is distributed at the rear of the coulter bar via specific spreaders.

Regardless of the size of the seed, the **HELICA roller** allows you to switch from one crop to another with ease. As the SH 1540 - 2560 - 4080 hoppers are **ISOBUS-compatible**, the seed distribution is automatically controlled by the tractor's groundspeed and/or hitching position information.

Thus you distribute a product perfectly **individually dosed** directly during the passage with your seed drill.

You can sow **plant cover with three different varieties**, individually dosed using both compartments of your main hopper and this third additional hopper for example for small seeds that germinate easily on the surface such as grass seeds or even anti-slug pellets.



Specific spreader

EXAMPLES OF USE	SOWING OF WHEAT	SOWING OF COVER
Product 1	Wheat 130 kg/ha At 2 cm	Oats 15 kg/ha At 2 cm
Product 2	Starter fertiliser 60 kg/ha At 3 cm	Peas 20 kg/ha At 3 cm
Product 3	Anti-slug pellets 5 kg/ha On the surface	Clover 15 kg/ha On the surface

Before establishing a cover crop, find out about the regulations in your area (nitrate directive), especially about the choice of varieties, dates and modes of destruction.



Associated electronic equipment:

KUHN SEED DRILL	SH 1120	SH 1540 – SH 2560 – SH 4080
VENTA ISOBUS	ISOBUS*	ISOBUS*
ESPRO		-
AUROCK		-
TF 1512 ISOBUS		-
ESPRO RC	KSM 50	KSM 50
AUROCK RC		-

- : Impossible / * : only if total of metering units is >2.

Technical specifications

	SH 1120	SH 1540	SH 2560	SH 4080
Corresponding working width*	3 to 6 m	3 to 3,5 m	4 m	6 m
Hopper capacity (l)	110	150	250	400
Seeding density range (kg/ha)	0.6 to 65	2.2 to 130		
Metering system	HELICA			
Drive	Via 12V electric motor			
Number of grooves = number of spreader plates	2	4	6	8

*Limits differ according to products and widths. For further details, please consult us.

Important: the metering unit is not adapted for sandy or dusty substances.

KUHN SAS - 4 Impasse des Fabriques - BP 50060 F-67706 Saverne CEDEX - France - www.kuhn.com

Information given in this document is only for information purposes and is non-contractual. Our machines are in compliance with regulations in force in the country of delivery. In our literature, and for improved illustration of certain details, some safety devices may not be in operating position. When operating these machines, these devices must be in position in accordance with the requirements indicated in the operator's manuals and assembly manuals. Respect the tractor gross vehicle weight rating, its lift capacity and maximum load per axle and tyres. The tractor front axle load must always comply with the regulations of the country of delivery (In Europe, it must reach minimum 20% of the tractor net weight). We reserve the right to change any designs, specifications or materials listed without further notice. Machines and equipment in this document can be covered by at least one patent and/or registered design. Trademarks cited in this document may be registered in one or several countries.

To protect the environment, this leaflet is printed on chlorine-free paper. Printed in France - REF. 920 613 GB - 04.20 - Copyright KUHN 2020

