



Trailed min-till seed drills with discs
ESPRO 3002 | 4002 R | 6002 R





Contents

04-05	The ESPRO range	12	Easily-accessible and simple settings	16-17	Make life easier with VISTAFLOW valves!
06-07	Speed and precision with the CROSSFLEX seeding bar	13	Simplified maintenance	18-19	More seeding possibilities with several hoppers
08-09	An easy-to-pull SEED DRILL	14-15	ISOBUS-READY solutions	20-21	More optional equipment
10	Precise and constant application rate			22	Technical specifications
11	Practical, large-capacity hopper				

ESPRO

Trailed min-till seed drills with discs

LESS POWER REQUIRED FOR GREATER OUTPUT

ESPRO 1002 (R) TRAILED MIN-TILL SEED DRILLS WITH DISCS, AND 3.00-, 4.00-, AND 6.00-METRE WORKING WIDTHS, HAVE BEEN DESIGNED TO ENABLE YOU TO ESTABLISH YOUR CROPS QUICKLY AND AT CONSTANT DEPTHS. THEY ARE SUITED TO MIN-TILL AND CONVENTIONAL SEEDING METHODS AND WILL MEET ALL YOUR REQUIREMENTS.



OPTIMUM WORK OUTPUT

During seeding periods, speed is an important factor. Seed drills in the ESPRO 1002 (R) range provide optimum work output and high autonomy thanks to ground speeds of up to 17 kph and hopper capacities of 2,500 or 3,500 litres, depending on the model.

FAST, PRECISE SEEDING

ESPRO 1002 (R) seed drills are equipped with the CROSSFLEX seeding bar renowned for its precision, even at high speeds. Attached to a KUHN-exclusive metal frame with rubber mounts, they ensure uniform sowing depths and enhance soil-to-seed contact.

LOW PULL-POWER REQUIREMENT

Thanks to their lighter weight, seed drills in the ESPRO 1002 (R) range require less traction power, so you save on fuel. This lower power requirement is largely due to the press wheels being in front of the seeding bar: a KUHN exclusive.

TILL, TAMP AND SEED IN ONE PASS

The ESPRO 1002 (R) range is composed of a 3-metre-wide model (ESPRO 3002) and two foldable, 4- and 6-metre models (ESPRO 4002 R and 6002 R). They feature six independent working sections to ensure regular crop emergence in any conditions, on ploughed or min-tilled land.

Headland turns are also quick and easy with the automated working units.



1

2

1. Level...

Benefit from a row of front press wheels, compatible with track-eradicators and a levelling bar, as an option. This equipment provides good soil-surface levelling before the two rows of working discs do their job.

2. Till...

Two rows of working discs open and mix the soil at the front of ESPRO seed drills to ensure that residue is well incorporated into the surface layers. The 460mm disc diameter helps to create a fine tilth. The concave shape of the discs makes them effective in heavy soils.

3. Tamp...

Seed-to-soil contact and a consistent seeding depth are vital to uniform germination and crop establishment. ESPRO seed drills have a row of rear press wheels behind the working discs, each one of which consolidates the soil ahead of the seeding units.

Levelling adapted to diverse conditions

A row of front press wheels levels the topsoil. It is followed by two rows of working discs and a second row of press wheels that crumble the soil and prepare the seedbed beautifully before the seeding units do their job. This equipment contributes to reducing fuel consumption as well as preventing the seed drill from sinking in light soils. Front wheel pressure is hydraulically adjustable from the cab to ensure a great performance in any type of soil.



3

4

5

6

4. Seed at the right depth

The ESPRO range features the CROSSFLEX seeding bar which provides a uniform seeding depth in virtually all conditions and working speeds. The seeding units are mounted on a specially profiled bar on rubber blocks.

5. Ensure seed-to-soil contact...

Seeding row press wheels enhance the transfer of moisture to seeds by capillary action. They also ensure seed-to-soil contact behind the seeding unit.

6. ...and cover

The covering harrow covers each seed with soil beautifully.

AN EASY-TO-PULL SEED DRILL

ESPRO 1002 (R) seed drills are equipped with a new lighter-weight hopper and a row of offset press wheels. This means that pull-power and fuel requirements are lower and output is higher.



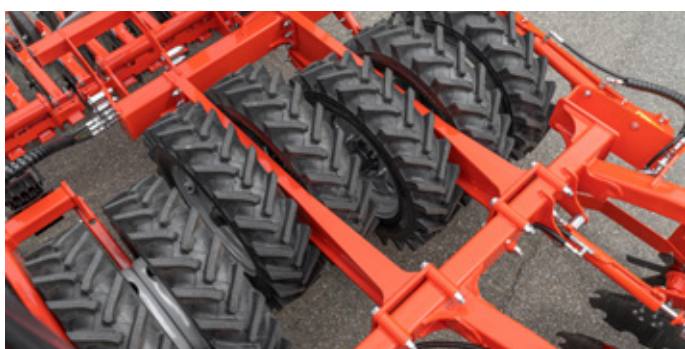
Large diameter wheels

The 900mm wheel diameter reduces rolling resistance considerably compared to smaller wheels and, therefore, the power required to pull the machine.



Narrow wheels

Narrow wheels, measuring only 210mm in width, with an 85mm gap between them, produce uniform tamping across the entire working width for a beautifully even seedbed.



Offset wheels

The wheels are offset 200mm front to rear, which minimises the bulldozing effect: soil does not accumulate in front of the row of press wheels and residue flow-through is made easier. In addition, each wheel runs at its own speed preventing track marks on bends and headlands.

Wheels with perfectly square profile

The tyres have a square profile which creates uniform tamping across the whole tyre width and on all seed rows. Deep treads crumble the earth to produce a homogeneous seedbed and a constant seeding depth.

THE CROSSFLEX SEEDING BAR: PRECISION AT HIGH SPEED

The CROSSFLEX seeding bar is equipped with large-diameter double discs, bevelled and offset by 41 mm. The seeding units are fitted on an exclusive cross-shaped bar and are securely held in place by polyurethane blocks. The extreme stability of this design ensures regular seeding depth even at high speeds.



Regular seeding depth

The attachment system of the CROSSFLEX seeding unit makes it highly stable, providing a precise and constant seeding depth across the whole plot, even at high speeds.



Cutting-edge double discs

The 350mm-diameter double discs with 41mm offset are designed with a bevelled edge to penetrate the soil efficiently and cut through crop residues. The front disc can wear down to 32mm before a difference between the discs causes soil clogging.





Precise seed positioning

The seed outlet is located in front of the discs' hub to ensure regularity. The discs «accompany» the seeds directly into the furrow. The outlet's V-shape makes for great seed-delivery precision with no bounce.



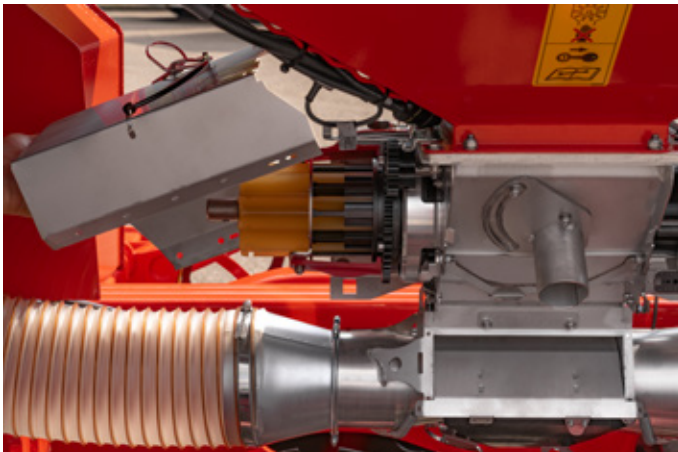
The perfect finish

Press wheels ensure optimum soil-to-seed contact. They are equipped with hard-wearing carbide-plated DURAKARB scrapers to prevent soil build-up in damp conditions. They are followed by the DURASTEEL covering harrow which has a longer service life and ensures perfect furrow closing, great seed covering, low wear and uniform levelling.



PRECISE AND CONSTANT APPLICATION RATE

The pneumatic circuit on ESPRO 1002 (R) seed drills consists of a powerful blower and a centralised metering unit with volumetric flutes capable of delivering all seed types, from the smallest to the largest, with the same precision. Seeds are sent into the seeding units uniformly.



Multipurpose metering system

ESPRO 1002 (R) seed drills have a metering system capable of distributing different seed types such as rapeseed, wheat, and beans, at application rates from 1 to 430 kg/ha. The application rate is respected irrespective of the quantity of seeds, ground speed, and working conditions: benefits that contribute to yield optimisation!

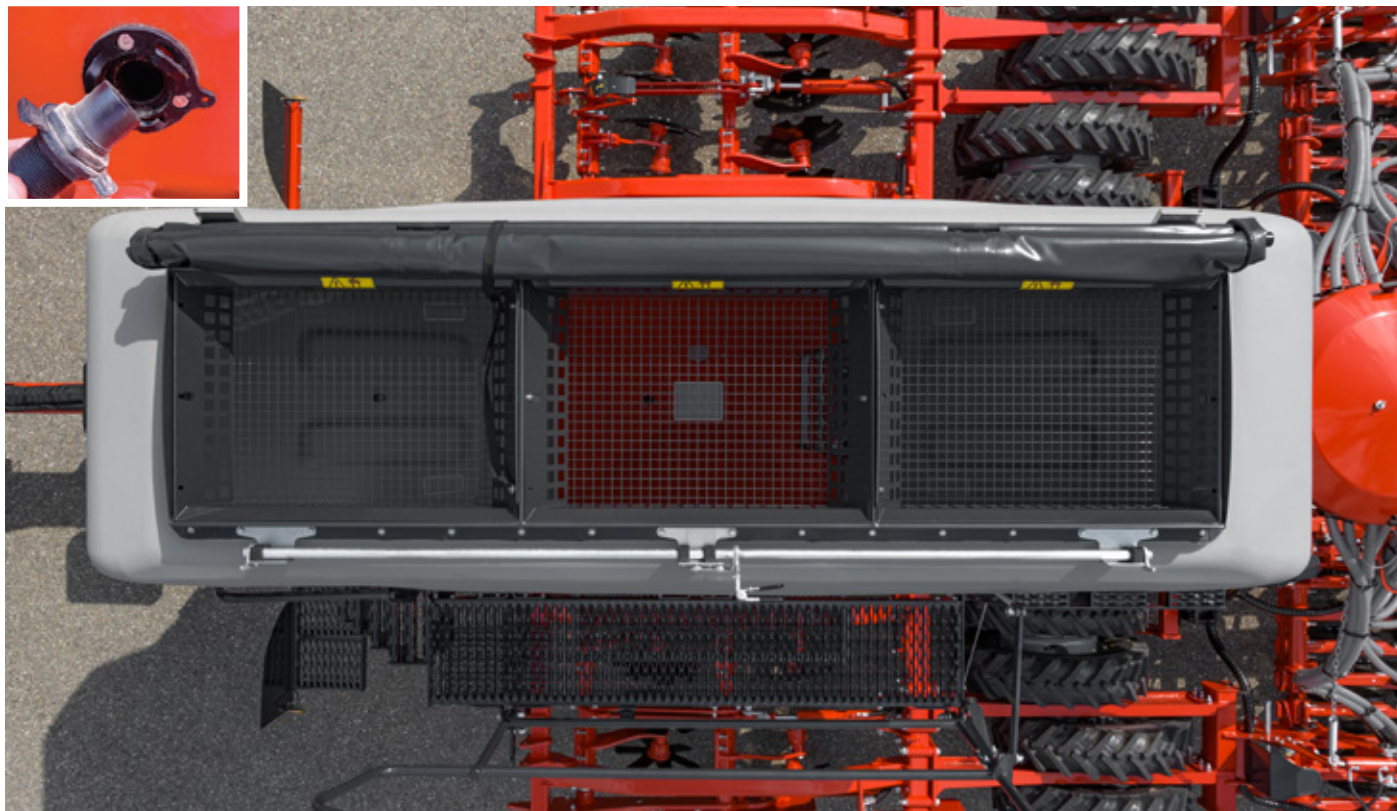


Simple calibration test

Start and stop the calibration test with a simple on/off button next to the metering unit. Once the weight has been entered into the terminal, the motor adjusts the speed of the metering unit automatically according to application rate and working speed.

PRACTICAL, LARGE-CAPACITY HOPPER

Seed drills in the ESPRO 1002 (R) range are long-range machines thanks to hopper capacities from 2,500 litres (for the 3.00-metre version) to 3,500 litres (for the 4.00- and 6.00-metre versions). They come with two sensors so you can see the level of seeds remaining in the hopper, which is clearly shown on the screen of the terminal.



Safe and easy access to the hopper

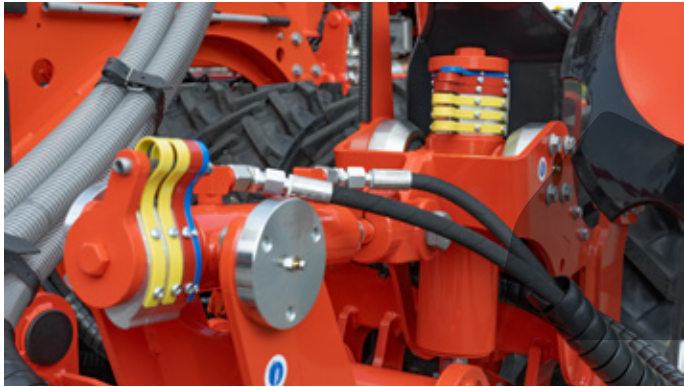
Side-access platforms, secured at mid-height, give easy access to hoppers on ESPRO 1002 (R) seed drills. And if you forget to fold them away, they fold automatically when moving into transport mode.

Easy filling

Large hopper openings and low loading heights facilitate filling with big-bags or in bulk. Half-open mode makes it possible to get as close as possible to the seed drill for filling. The cover is equipped with an automatic roll-up and centralised locking system.

EASILY-ACCESSIBLE AND SIMPLE SETTINGS

ESPRO 1002 (R) seed drills are designed to be quick and easy to adjust. No tools are required and all the essential parts, such as the hopper, the cylinders for seeding depth and disc coulters pressure, are easily accessible.



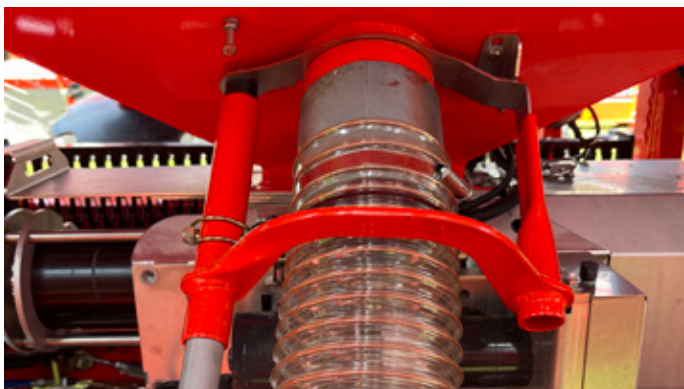
Fast adjustments with simple spacers

The working discs, seeding depth and disc coulters pressure are adjusted with spacers on the hydraulic cylinders at the machine extremities, which are accessible from the ground. Continuous working-disc adjustment, from the cab, is also available.



Practical calibration

The weighing system is practical and easy with dedicated bag and weighing cell on the machine. The start/stop button for the calibration test is also on the machine, next to the metering unit.



Simple, tool-free emptying

A hatch and a transfer tube allow for easy controlled emptying. It is also easy to empty the metering unit, no tools required, via two hatches.



Good ground following

The main frame on ESPRO 1002 (R) seed drills have three separate sections that allow the outer extensions to adapt to the plot across the entire width of the seed drill. You can adjust the pressure of the extensions from the cab.

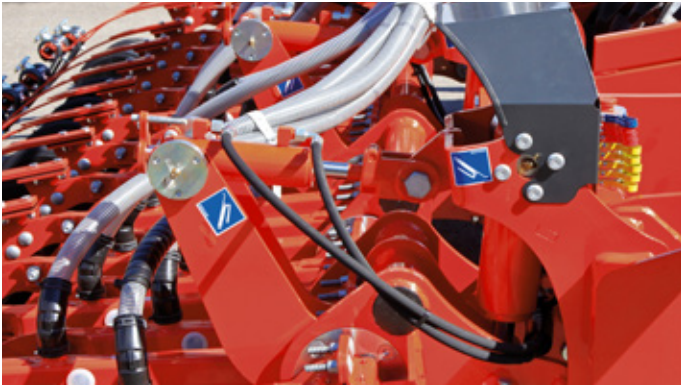
SIMPLIFIED MAINTENANCE

ESPRO 1002 (R) seed drills were designed with the objective of making maintenance quick, easy and practical, to save you time: easier access to daily servicing points, fewer and easily identifiable greasing points, etc.



Maintenance-free seeding units

The CROSSFLEX seeding bar is made up of single-arm seeding units fitted with a rubber-block mounting system on a KUN-exclusive metal bar. The only wearing parts on the machine are the ones that touch the soil.



Easy greasing

Large, maintenance-free articulations mean that fewer greasing points are needed. And the greasing points are easy to see and access for trouble-free interventions.



Maintenance-free working discs

The working discs have sealed bearings which do not require maintenance. They have face seals which make them perfectly airtight and prevent any risk of pollution. This reliable system means peace of mind for users.



Fast wheel change

If you get a puncture, it is quick and easy to change wheels. They are fitted in pairs to make it faster and more practical, and the inflation valves are easy to access.

TAKE ADVANTAGE OF ISOBUS COMPATIBILITY ON ESPRO SEED DRILLS



CCI 60, CCI 800, CCI 1200: ONE TERMINAL FOR ALL KUHN MACHINES

CCI 60, CCI 800 and CCI 1200 ISOBUS terminals are AEF-certified. They focus on three priorities: performance, visibility and flexibility. The CCI 60 is simple to use with backlit keys. The CCI 800 and 1200 terminals are equipped with a large antiglare touchscreen capable of displaying different essential information at the same time on the same screen. They also enable automatic seeding management by GPS, whether it be for tramlining, application rate modulation via the TC-GEO function, or automatic metering start-up and shut-off during headland turns via the Section Control (TC-SC) function.



CCI 60: simply ISOBUS

The new CCI 60 ISOBUS terminal comes with a 5.7"/14.5cm colour touchscreen. It features 12 backlit keys for easy access to machine functions.



CCI 800: the compact ISOBUS terminal

The 8"/20.3cm screen displays the main machine and mini-views on the side. Click on the mini-view you wish to enlarge.



CCI 1200: innovative, panoramic, high performance

With the 12.1"/30.5cm screen, all essential information is displayed. Different display formats are possible: mini-view / maxi-view / double UT.

A MULTITUDE OF APPLICATIONS COME AS STANDARD



TECU
Recover basic
tractor information



CONTROL
Control your tasks
and your ISO-XLM documentation



CONVERT
Connect to your
biomass sensor



CAMERA
Connect a camera
and display live images



HELP SYSTEM
The assistance
you need

DISCOVER THE CCI APPLICATIONS



CCI. COMMAND SECTION CONTROL
Automatic seeding management by D-GPS



CCI. COMMAND PARALLEL TRACKING
Guidance + tramlining assistance by GPS
with the Tramline Control function



CCI. TASK CONTROL*
Application rate modulation by GPS (SHP and ISOXML) of several products. Data import/export via agrirouter



* Available as standard on all KUHN CCI 800 and CCI 1200 terminals after signing your connected terminal in online on your MyKUHN account.

Everything at your fingertips

Combine your CCI terminal with your CCI A3 ISOBUS joystick and have the control of the main functions of your seed drill at your fingertips. It is so easy to start your headland turn sequence using the CCI A3!



MAKE LIFE EASIER WITH VISTAFLOW VALVES!

The distribution head on ESPRO 1002 (R) seed drills is equipped, as standard, with VISTAFLOW valves for 2x2-row tramlining. It is possible to fit VISTAFLOW valves to each row, as an option, for universal tramlining and improved clogging monitoring.



Universal tramlining

Tramlining becomes possible even when seeding and spraying widths are incompatible. With this option, no more moving valves or tubes on seeding units! You can access additional functions such as half-width shut-off and every-other-row shut-off from the cab. Different configurations can be saved via the user interface for subsequent operations. It saves the following tramlining configurations: working width, track and tyre width of a sprayer or self-propelled sprayer and fertiliser spreader.



Need help?

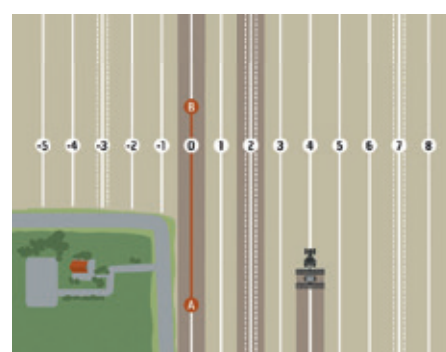
Use the KUHN VISTAFLOW configurator to find out how many valves you need to perform your tramlining rhythms according to seeding and treatment widths (sprayer and fertiliser spreader).

Go to www.kuhn.com



Smart monitoring and detection of tube blockage

VISTA FLOW tramlining valves feature smart monitoring and detection systems. If a blockage occurs in the distribution head, the terminal automatically displays a warning message indicating the row concerned, so the necessary action can be taken rapidly. A red LED lights up on the distribution head to show exactly which valve is blocked.



Benefit from Tramline Control technology

Generate your tramlining lines automatically using your GPS position. The Tramline Control option* is simple and gives you even more precision.

* CCI 800 or 1200 necessary with CCI. Command Parallel Tracking.

ADDITIONAL SEEDING POSSIBILITIES WITH SEVERAL HOPPERS

SH 1120 HOPPER

Sow up to three different species

Compatible with
ESPRO 3002, 4002 R, 6002 R

Seed drills in the ESPRO 1002 (R) range can be equipped, as an option, with an additional SH 1120 hopper with a capacity of 110 litres which allows you to add another seed type, fertiliser or slug pellets to the main crop. The HELICA metering system features helical, volumetric flutes that make it possible to distribute a multitude of products, of different shapes and sizes, at application rates from 0.5 to 30 kg/ha. The desired rate is injected into the flow of the main metering unit. The products are then mixed and delivered into the same seeding line.



SH 1540, 2560, 4080 HOPPERS

Broadcast seeding while sowing the main crop

Compatible with
ESPRO 3002, 4002 R, 6002 R

Optional SH 1540, 2560 and 4080 additional hoppers make it possible to carry out broadcast seeding while sowing your main crop. They are capable of application rates from 1 to 80 kg/ha. The product is spread from the back of the seeding bar, across the whole working width, with specific spreaders.



SH 600 HOPPER

Optimise productivity

Compatible with
ESPRO 6002 R

SH 600 additional hoppers, available as an option, allow you to broadcast seeds at the same time as sowing your main crop. A real advantage in terms of saving time and fuel, as well as protecting the structure of your soil. With a capacity of 600 litres, this additional hopper provides high autonomy which reduces the number of refilling stops! Its large-range metering capacity from 1 to 430 kg/ha provides high-precision application rate adaptation to seeding conditions.



KUHN ADDITIONAL HOPPERS COMPATIBLE WITH ESPRO 1002 (R) SEED DRILLS

Technical specifications	SH 1120	SH 1540	SH 2560	SH 4080	SH 600 (ESPRO 6002 R)
Corresponding working width (m)*	3.00 to 6.00	3.00	4.00	6.00	4.00 to 9.00
Hopper capacity (l)	110	150	250	400	600
Seeding density (kg/ha)	0.50 to 30	1 to 80			1 to 430
Metering system	HELICA				Centralised volumetric metering unit with flutes
Drive	ELECTRIC				
Number of flutes = number of spreaders	-	4	6	8	16, 20, 24, 30 or 36 according to model

IMPORTANT - THE METERING UNIT IS NOT SUITABLE FOR SANDY OR DUSTY SUBSTANCES

MORE OPTIONAL EQUIPMENT

Gain access to a higher standard of user comfort with our optional equipment designed to adapt to your every need.



Front press wheel set

ESPRO 1002 (R) seed drills can be equipped with an optional, foldable and pressure-adjustable front press wheel set. It is ideal for uniform tamping and easy clod crumbling.



Track eradicators

ESPRO 1002 (R) seed drills can be equipped with optional track eradicators, compatible with the wheel set. They create fine, airy soil where it has been compacted by the tractor wheels. They are fitted to cylinders so are quick to fold up for headland turns.



Front levelling blade

ESPRO 1002 (R) seed drills can be equipped with an optional hydraulic levelling blade which contributes to obtaining a constant seeding depth by levelling the soil.



Pre-emergence markers

Optional pre-emergence markers, with separate mounting concept, can be positioned behind any seed disc coulters to adapt to different tramlining widths. Furthermore, being independent from the seed disc coulters means that seeding quality and disc coulters pressure are not affected.



LED work lights

Additional, optional LED work lights improve lighting for night work. In addition, a camera can be fitted to the back of the seed drill for better visibility during manoeuvres.



VARIO hydraulic unit

The hydraulic blower can be powered by the tractor's hydraulic system or an independent circuit (called VARIO). As the VARIO unit is independent, blower speed is not impacted by fluctuations in engine speed.

Technical specifications

	ESPRO 3002	ESPRO 4002 R	ESPRO 6002 R
Working width (m)	3.00	4.00	6.00
Transport width (m)	3.00		
Weight approx. with covering harrow (kg)	3,700	5,500	7,300
Tractor power requirement (kW/hp)	74/100	117/160	147/200
Hitch category	Cat. 3 lower links		
Necessary hydraulic equipment	2 x SA (blower drive, hydraulic valve bank) 1 x free return (for the valve bank and the blower)		
Hopper			
Capacity (l)	2,500	3,500	
Loading height (m)	2.69	2.96	
Opening dimensions (cm)	263 x 64		
Metering system			
Metering	Centralised volumetric metering unit with electric drive and disengageable agitator (1 to 430 kg/ha)		
Metering system drive	Electric		
Blower drive	By the tractor's hydraulics or independent VARIO hydraulic unit (800 - 1000 min ⁻¹)		
Seeding units			
Number of rows	20	26	40
Seeding bar	Opening discs Offset press wheels CROSSFLEX seeding bar		
Seeding management			
Terminal	ISOBUS		
Tramlining	VISTAFLOW valves: ◆ 2x2-row tramlining ◇ Half-width shut-off ◇ Monitoring and universal tramlining		
Optional equipment			
Track eradicators	◇		
Levelling blade	◇		
Pre-emergence markers	◇		
Work lights	◇		
Adjustable hydraulic valve bank	◇		

◆ Standard ◇ Optional - Not available



KUHN PARTS



Designed and manufactured to rival time. KUHN foundries and forge as well as a high-level manufacturing process allow the production of spare parts to defy time. You can truly rely on our know-how and our genuine parts. Farmers benefit from our client support and logistics services via any KUHN PARTS warehouse, which provide quick and reliable repair solutions in cooperation with your nearest authorized KUHN dealer.



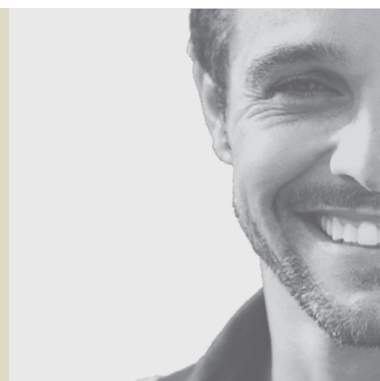
KUHN SERVICES*

KUHN sos order - Express spare parts service, 24/7**

KUHN protect+ - The choice of professionals!

KUHN i tech - For ever quicker repairs!

KUHN finance - Invest rationally!



* Not all services are available in all countries.
** except January 1, May 1 and December 25.

MyKUHNN

THE LINK TO MY SUCCESS

MyKUHNN is your online space. Sign up today and find out how MyKUHNN's exclusive services will help you manage your KUHN machinery and terminals more effectively. Log on with your computer, mobile phone or tablet computer to access spare parts catalogues, technical documentation and many connected services.



Discover the most complete range of seed drills on the market.



1. Mounted mechanical - 2. Integrated mechanical - 3. With front hopper - 4. Integrated pneumatic - 5. Foldable pneumatic - 6. Mounted for min-till - 7. Trailed for min-till - 8. Precision seed drills

KUHN SAS - 4 Impasse des Fabriques - BP 50060 - F-67706 Saverne CEDEX - FRANCE
KUHN NORTH AMERICA, INC. - 1501 West Seventh Avenue - Brodhead, WI 53520 - USA
KUHN FARM MACHINERY PTY. LTD - 313-325 Foleys Road - Deer Park, VIC, 3023 - AUSTRALIA
KUHN FARM MACHINERY (U.K.) LTD - Stafford Park 7 - GB TELFORD/ SHROPS TF3 3BQ

To find your nearest KUHN dealer,
visit our website www.kuhn.com

Information given in this document is only for information purposes and is non-contractual. Our machines are in compliance with regulations in force in the country of delivery. In our literature, and for improved illustration of certain details, some safety devices may not be in operating position. When operating these machines, these devices **must** be in position in accordance with the requirements indicated in the operator's manuals and pre-delivery instructions. RESPECT THE ROAD REGULATIONS IN FORCE AS WELL AS the tractor gross vehicle weight rating, its lift capacity and maximum load per axle and tyres. The tractor front AXLE load must always comply with the regulations of the country of delivery (In Europe, it must reach minimum 20 % of the tractor net weight). We reserve the right to change any designs, specifications or materials listed without further notice. Machines and equipment in this document can be covered by at least one patent and/or registered design. Trademarks cited in this document may be registered in one or several countries.

To protect the environment, this leaflet is printed on chlorine-free paper.
Printed in France - 920 545 EN - 10.25 - Copyright KUHN 2025

