



Mounted tine seed drills for min-till seeding  
**MEGANT 602 R | 722 R | 802 R**





## Summary

- 04-05** The benefits of MEGANT at a glance
  - 06-07** A seed drill adapted to all conditions
  - 08-09** Optimal work output and controlled costs
  - 10-11** Comfort within reach
  - 12-13** Whether your tractor is ISOBUS or not, we have the solution!
  - 14** Precise and consistent metering
  - 15** A wide range of options for greater flexibility
  - 16** Equipment that makes the difference
  - 17** Testimonials
  - 18-19** Technical specifications
-

## MEGANT

Mounted tine seed drills for min-till seeding

### VERSATILITY IN ALL SOILS

OPTIMISE YOUR WORK OUTPUT AND REDUCE YOUR COSTS WITHOUT COMPROMISING ON THE QUALITY OF YOUR WORK! MEGANT TINE MOUNTED SEED DRILLS, WITH WORKING WIDTHS OF 6.00, 7.20 AND 8.00 METRES, ENABLE QUICK AND UNIFORM CROP ESTABLISHMENT ON EITHER PRE-PREPARED SOIL OR WHEN USING MINIMUM TILLAGE PRACTICES.



#### **Achieve greater flexibility in the field**

The optimal seeding windows are often short. MEGANT tine seed drills are designed to deliver high-quality seeding in a wide range of soil conditions, whether dry or wet, stony, or with plant residues.

#### **Optimise your time**

During seeding periods, speed is a key factor. The seed drills in the MEGANT range ensure optimum work output and a high level of autonomy, thanks to a 1,800-litre hopper and a working width of 6.00, 7.20 or 8.00 metres.

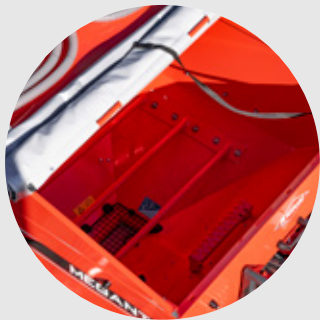
#### **Enjoy maximum flexibility**

Seeding operations can be managed using a CCI 60, CCI 800, CCI 1200 ISOBUS terminal, or any other ISOBUS terminal already available on the farm. The KUHN VT 30 terminal is the solution for non-ISOBUS tractors! Only a power supply cable is required to switch from one terminal to another.

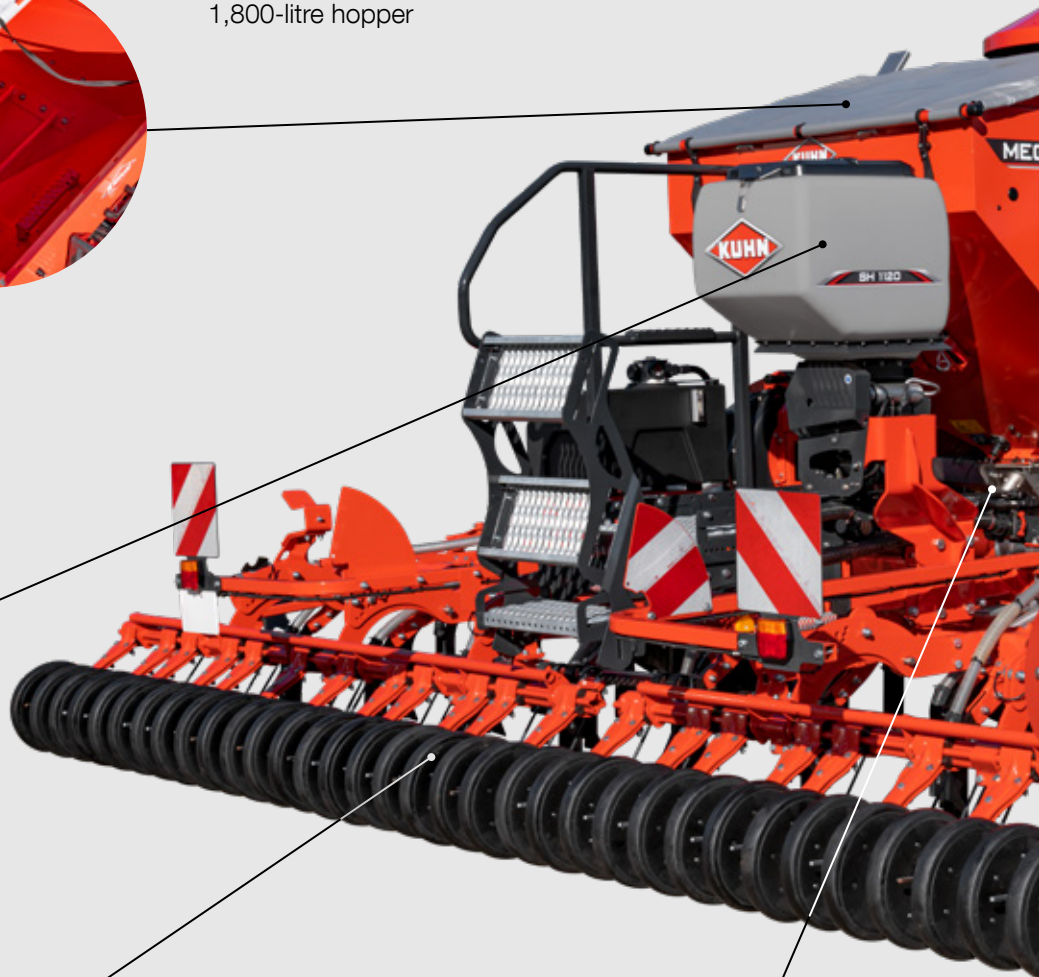
# THE ADVANTAGES OF THE MEGANT AT A GLANCE

Our agricultural systems are evolving and adapting to meet the environmental, agronomic, and economic challenges of today's and tomorrow's farming. MEGANT tine seed drills address these new challenges by offering fast seeding, high autonomy, and low power requirement. Synonymous with versatility, they are capable of seeding in varied and sometimes difficult conditions.

**Autonomy**  
1,800-litre hopper



**Many possibilities**  
SH 1120 additional hopper  
(optional equipment)



**A perfect finish**

Double covering harrow

OR

Covering harrow + press wheels



**Precise and regular**

Central volumetric metering unit with electric drive





**Fast**  
VISTAFLOW tramlining valves  
*(optional equipment)*

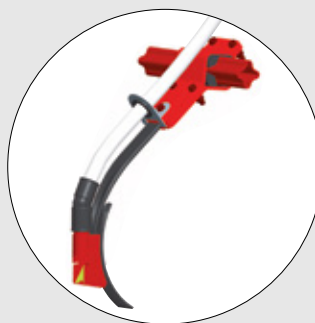
**Operating comfort**  
VT 30 or ISOBUS terminals



**Controlled seeding depth**  
Front gauge wheels provide optimum  
ground following



**Versatile**  
Seeding tines penetrate well into the soil and facilitate  
operations in wet and stony conditions, or in plant residues



## A SEED DRILL SUITABLE FOR ALL CONDITIONS

The tines on the MEGANT range of seed drills ensure effective penetration in all soil types. Their uniform distribution over 4 rows provides consistent and ample clearance, facilitating their passage through plant residues, wet conditions, or stony terrain.



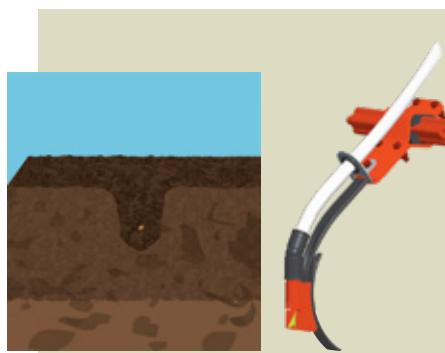
### THREE TYPES OF SEEDING TINE

#### 12 mm thin tines



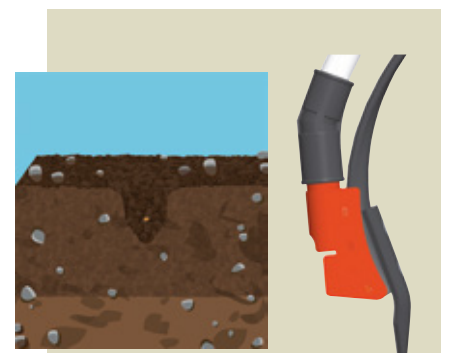
The 12 mm thin and robust tines penetrate the soil beautifully without displacing the soil and plant residues in the seeding line too much. Consequently, the humidity in the soil is preserved.

#### Reversible forward pointing coulters



The reversible coulters ensure great soil penetration due to their forward pointing design. They are particularly suited to working on tilled land.

#### Straight coulters



The straight coulters are ideal for stony plots. Their specific shape prevents stones from being lifted and optimises seed delivery.



### **Optimum ground following**

MEGANT seed drills can be equipped with 4, 6, or 8 front gauge wheels. Wide and large in diameter, these wheels provide excellent load-bearing capacity. Positioned outside the frame, they help reduce clogging and optimise ground following. This ensures the seed drill stability and maintains consistent seeding depth on each row of tines, regardless of the conditions, including on hilly terrain and at high speeds.



### **Consistent seeding depth**

The seeding tines are mounted on a beam with an exclusive star-shaped profile and fixed by four polyurethane mounts. This unique design ensures perfect stability, uniform seeding depth, and allows for about 15 cm of vertical travel to handle obstacles. MEGANT min-till seed drills have been designed to seed quickly without compromising establishment quality



### **The secret to better seed-to-soil contact**

MEGANT seed drills can be equipped with a covering harrow and tamping wheels. The weight distribution is supported both by the front wheels carrying the hopper load and by the rear tamping wheels. These tamping wheels track ground variations independently from the tractor's movements, ensuring a consistent seeding depth, even on steep slopes. The tamping wheels are mounted on elastomer mounts that allow them to clear obstacles easily. They are preceded by a covering harrow to ensure perfect furrow closing.



### **Perfect coverage: an advantage for high-speed seeding**

These seed drills can be equipped with a double covering harrow. Composed of two rows of flexible tines, it ensures:

- perfect closing of the furrow,
- optimal seed coverage,
- and excellent ground levelling.

The trailing design of the tines facilitates passage through straw or plant residues.

**MEGANT** 602 R | 722 R | 802 R

## OPTIMAL WORK OUTPUT AND CONTROLLED COSTS



### Seed up to 8 hectares per hour with the 8-metre version

With a working width of 6 to 8 metres and a hopper capacity of 1,800 litres, the MEGANT range seed drills ensure a high work output and great autonomy. The distribution head and seed delivery tubes are positioned outside the hopper. Thus, the hopper capacity corresponds to the actual volume of seeds that can be loaded.



### Keep going even in the presence of plant residues

The tines on the MEGANT mounted min-till seed drills are arranged in a staggered pattern over 4 rows spaced 40 cm apart, with a spacing of 60 cm between each tine on the same row. This configuration, combined with a 50 cm clearance under the frame, facilitates machine passage through plant residues. The risk of clogging is therefore minimised.



### **Fuel savings**

With their lightweight design, these seed drills require only low power and are suitable for tractors starting at 150 hp for the MEGANT 602 R, 180 hp for the MEGANT 722 R, and 200 hp for the MEGANT 802 R. They provide a response to current environmental and economic challenges by enabling fast seeding and low fuel consumption.

### **Optimise your maintenance costs**

Featuring a specific profile and a robust design, the MEGANT tines require no maintenance. This represents a true economical alternative.

## OPERATING COMFORT

MEGANT seed drills are designed so that all machine adjustments are simple and quick to perform. Key components such as the hopper, distribution head, and metering unit are easily accessible.



### Easy loading

The distribution head and the hoses are on the outside of the hopper to make loading and cleaning easier. This is very useful when changing seeds for example! The 1,800-litre hopper has a large opening (135 x 85 cm) which is easily accessible with the retractable step ladder. The hopper cover is equipped with an automatic winding system.



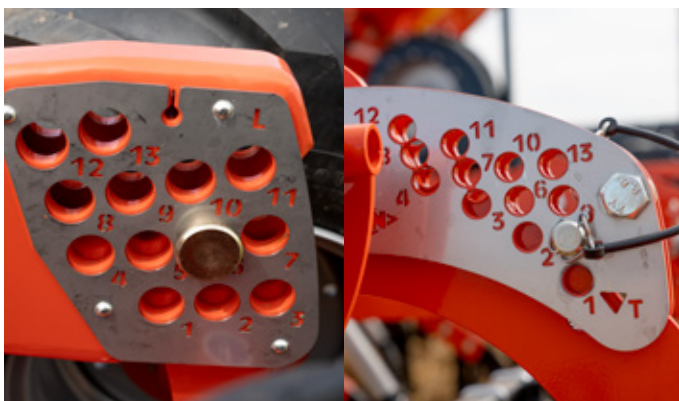
### A practical calibration test

It is essential to carry out a calibration test before seeding to ensure that the application rate is accurate. To simplify this process, all the necessary tools are within arm's reach. Whether the machine is in transport or working position, the metering unit is easy to access. Just open the hatch and the seeds flow directly into the calibration bag. Spline opening is easy to adjust by crank handle. An on/off button starts and stops the calibration test.



### A powerful blower system driven either by an independent hydraulic system or by the tractor

The blower's hydraulic drive can be powered by the tractor's hydraulic system or by an independent system (called VARIO). Thanks to the latter's independence, the turbine rotation speed is not affected by fluctuations in the engine speed. This offers several benefits: easier adjustment of blower speed, a constant seed flow to the seeding units, and fuel savings.



### Quick and easy seeding-depth adjustment

Seeding depth is set by adjusting the height of the front gauge wheels. Just move the pin to a different position on the plate. For seed drills with press wheels, setting is the same. A simple and effective solution that requires no tools! For perfect seed covering, it is also possible to adjust the pressure and the angle of the tines on the covering harrow independently.



### **Easier tramlining**

The MEGANT 722 R, with a working width of 7.20 metres, allows symmetrical tramlining over five passes thanks to its compatibility with 36-metre treatment widths.

**MEGANT** 602 R | 722 R | 802 R

## WHETHER YOUR TRACTOR IS ISOBUS OR NOT, WE HAVE THE SOLUTION!

Is your tractor ISOBUS? Choose an ISOBUS terminal, CCI 60, CCI 800, CCI 1200, or any other ISOBUS terminal already available. Is your tractor not ISOBUS? The KUHN VT 30 terminal is made for you! Only a power supply cable is needed to switch from one to the other!



### The VT 30 terminal: simply the essentials

The VT 30 terminal with its 3.5"/8.9 cm touch screen is adapted to all types of tractor. It has been an effective tool on KUHN seed drills for a number of years.

Its functionalities are:

- Metering and blower-speed monitoring,
- Hopper low level alarm,
- Tramlining control,
- Field counter,
- Calibration test assistance.



**CCI 60, CCI 800 and 1200 terminals: the perfect blend of performance, visibility, and flexibility**

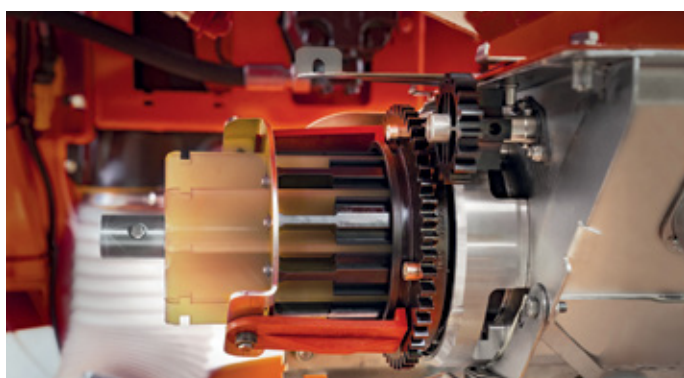
The CCI 60, CCI 800, and CCI 1200 ISOBUS terminals are AEF certified. They focus on three priorities: performance, visibility, and flexibility. The CCI 60 features a simple design with a 5.7» (14.5 cm) colour touchscreen and 12 backlit buttons to control ISOBUS machine functions.

The CCI 800 and 1200 have large anti-glare screens. These are capable of displaying multiple pieces of information simultaneously on the same screen. They allow you to automatically manage your seeding via GPS, whether for tramlining, application rate modulation using the TC-GEO function, or seed drill start/stop at the end of the field with Section Control (TC-SC).

**MEGANT** 602 R | 722 R | 802 R

## PRECISE AND REGULAR SEEDING

MEGANT seed drills are equipped with a centralised volumetric fluted metering system that distributes all types of seeds, from the smallest to the largest, with the same precision and uniformity. Seeds are pneumatically transported by an airflow to the distribution head, then delivered evenly to the seeding units. The application rate is maintained regardless of the remaining seed quantity in the hopper, ground speed, or working conditions (uneven, hilly terrain, etc.). All these features help optimise your yield!



### **A versatile metering system**

The metering system of the MEGANT seed drills is capable of distributing various types of seeds such as rapeseed, wheat, or horse beans within an application rate of 1 to 430 kg/ha. There is no need to disassemble or change any parts of the metering unit, even for small seeds. To protect delicate seeds, it is also possible to disengage the agitator without any tools.



### **Electrically driven metering system**

MEGANT seed drills feature an electrically driven metering system. Starting the calibration test is very simple! A start/stop button located near the metering system allows to start or stop the calibration test. Once the weight is entered into the terminal, the motor automatically adjusts the metering system rotation speed.

# A WIDE RANGE OF OPTIONS FOR GREATER FLEXIBILITY

## VISTAFLOW VALVES

The distribution head of the MEGANT seed drills can be equipped with VISTAFLOW valves allowing a 2x2-row tramlining. Optional half-width shut-off of the left side of the seed drill directly from the cab is also available for symmetrical tramlining. The application rate is automatically adjusted according to the desired configuration. Seeds are then transported to the distribution head positioned outside the hopper, with no possibility of returning to the hopper. This efficient design prevents the incorporation of dust or the return of seed mixtures to the hopper, for example when using an additional hopper.



## ADDITIONAL HOPPER SH 1120

MEGANT seed drills can optionally be equipped with an additional SH 1120 hopper with a capacity of 110 litres, allowing seeding of two crops simultaneously, such as cover crops, or seeding and fertilising in a single pass! Its HELICA metering system, made up of helical volumetric grooves, allows distribution of a wide range of products of different sizes and shapes, with an application rate from 0.5 to 30 kg/ha. The desired dose of the additional product (seed, fertiliser, or slug pellet) is injected into the flow of the main metering system. The products are then mixed and delivered in the same seeding line.



## EQUIPMENT THAT MAKES THE DIFFERENCE



### **Additional gauge wheels**

To adapt to varied working conditions, MEGANT seed drills can be equipped, in addition to the 4 standard gauge wheels, with 2 or 4 extra wheels. The wheel positions are as follows:

- 4 gauge wheels: 2 in the centre and 1 on each side,
- 6 gauge wheels: 4 in the centre and 1 on each side,
- 8 gauge wheels: 4 in the centre and 2 twin wheels on each side.

This layout ensures optimal ground following and maintains consistent seeding depth.



### **Twin gauge wheels**

For seeding in light soils or on very hilly plots, you can take advantage of central or integral twinning of the gauge wheels. This concept is extremely effective for controlling seeding depth in these conditions.



### **Front levelling blade**

MEGANT seed drills can also be optionally equipped with a hydraulically adjustable front levelling blade, helping to achieve perfectly consistent seeding depth.



### **Side markers**

Side markers are available as an option. They fold to the rear of the seed drill over the chassis without affecting the machine's working width. They also come with a safety system to protect against obstacles and a low-stop adjustment system.



## TESTIMONIALS...

THESE SEED DRILLS HAVE BEEN TIME-TESTED  
IN MANY COUNTRIES.



**Tobias MANGER**

Prosselsheim, Germany,  
Mixed crop/livestock farm

*"My conclusion about the MEGANT 602 R is as follows: wonderful. The purchase value for money, especially considering the machine's width, is truly excellent. In use, it is extremely fuel-efficient, even at high working speeds. The work output is a valuable asset, particularly during difficult years."*



**Emmanuel SPRANGER**

Meuse, France,  
Cereal farm

*"The MEGANT 722 R is a seed drill with low power, fuel, and maintenance requirements. It ensures a high work output, capable of exceeding 8 hectares per hour. It also ensures good ground following thanks to the gauge wheels and rear tamping wheels. The ISOBUS operation is comfortable and simple. Anyone can quickly get the hang of it."*



**James TUBBY**

Essex, England,  
Cereal farm

*The MEGANT 802 R, due to its working width and tine profile, delivers superior yields. We have found that it significantly reduces soil disturbance compared to other tine seed drills and adapts to all conditions, even the wettest."*

Find all the testimonials  
on our **Youtube channel**



Scan the QR code.



## Technical specifications

	MEGANT 602 R	MEGANT 722 R	MEGANT 802 R
<b>General specifications</b>			
Working width (m)	6.00	7.20	8.00
Transport width (m)	2.98		
Weight approx. with covering harrow (kg)	2,110	2,700	2,900
Hitch	3-point, cat. 2 and 3		
Hydraulic equipment required	1 DA for machine folding ◇ 1 DA for side markers ◇ 1 DA for levelling-blade adjustment ◇ 1 SA with free return for the LS blower		
<b>Hopper</b>			
Capacity (l)	1,800		
Loading height approx. (cm)	215		
Opening dimensions approx. (cm)	135 x 85		
<b>Delivery</b>			
Number of rows	40	48	40
Spacing between rows (cm)	15		20
Type of seeding unit	Seeding tines fitted to polyurethane mounts in 4 rows 40 cm distant		
Type of coulter	Choice: reversible forward pointing coulter / straight coulter / 12 mm thin tine		
Seeding-depth adjustment	By gauge-wheel height		
Depth-control wheels	4 wheels (26 x 12) ◇ up to 6 or 8 wheels as an option		
Covering module	Choice: Double covering harrow or covering harrow + press wheels		
<b>Distribution</b>			
Metering	Central volumetric metering unit with electric drive and disengageable agitator (1 to 430 kg/ha)		
Blower drive	By the tractor's hydraulics or ◇ by the independent hydraulic unit VARIO (800 - 1000 min <sup>-1</sup> )		
<b>Seeding management</b>			
Terminal	VT 30 (NO ISOBUS) or ISOBUS		
Tramlining	VISTAFLOW valves ◇ 2 x 2 rows ◇ half-width shut-off		

◆ Standard ◇ Optional - Not available



## KUHN PARTS



**Designed and manufactured to rival time.** KUHN foundries and forge as well as a high-level manufacturing process allow the production of spare parts to defy time. You can truly rely on our know-how and our genuine parts. Farmers benefit from our client support and logistics services via any KUHN PARTS warehouse, which provide quick and reliable repair solutions in cooperation with your nearest authorized KUHN dealer.



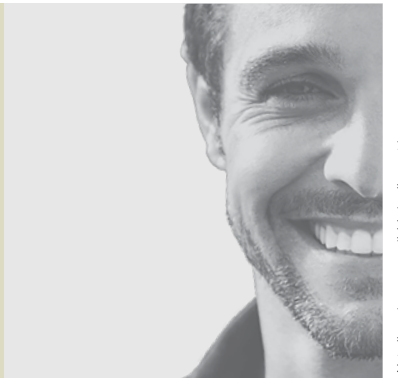
## KUHN SERVICES\*

**KUHN sos order** - Express spare parts service, 24/7\*\*

**KUHN protect+** - The choice of professionals!

**KUHN i tech** - For ever quicker repairs!

**KUHN finance** - Invest rationally!



\* Not all services are available in all countries.  
\*\* except January 1, May 1 and December 25

# MyKUHNN

THE LINK TO MY SUCCESS

MyKUHNN is your online space. Sign up today and find out how MyKUHNN's exclusive services will help you manage your KUHN machinery and terminals more effectively. Log on with your computer, mobile phone or tablet computer to access spare parts catalogues, technical documentation and many connected services.



## Check out the most complete range of seed drills on the market.



1. Mounted mechanical seed drills - 2. Integrated mechanical seed drills - With front hopper - 4. Integrated pneumatic seed drills - 5. Folding pneumatic seed drills - 6. Mounted for min-till seeding - 7. Trailed for min-till seeding - 8. Precision seed drills

KUHN SAS - 4 Impasse des Fabriques - BP 50060 - F-67706 Saverne CEDEX - FRANCE  
KUHN NORTH AMERICA, INC. - 1501 West Seventh Avenue - Brodhead, WI 53520 - USA  
KUHN FARM MACHINERY PTY. LTD - 313-325 Foleys Road - Deer Park, VIC, 3023 - AUSTRALIA  
KUHN FARM MACHINERY (U.K.) LTD - Stafford Park 7 - GB TELFORD/ SHROPS TF3 3BQ

To find your nearest KUHN dealer,  
visit our website [www.kuhn.com](http://www.kuhn.com)

Information given in this document is only for information purposes and is non-contractual. Our machines are in compliance with regulations in force in the country of delivery. In our literature, and for improved illustration of certain details, some safety devices may not be in operating position. When operating these machines, these devices **must** be in position in accordance with the requirements indicated in the operator's manuals and pre-delivery instructions. RESPECT THE ROAD REGULATIONS IN FORCE AS WELL AS the tractor gross vehicle weight rating, its lift capacity and maximum load per axle and tyres. The tractor front AXLE load must always comply with the regulations of the country of delivery (In Europe, it must reach minimum 20 % of the tractor net weight). We reserve the right to change any designs, specifications or materials listed without further notice. Machines and equipment in this document can be covered by at least one patent and/or registered design. Trademarks cited in this document may be registered in one or several countries.

To protect the environment, this leaflet is printed on chlorine-free paper.  
Printed in France - 920 013 EN - 08.25 - Copyright 2025 KUHN

